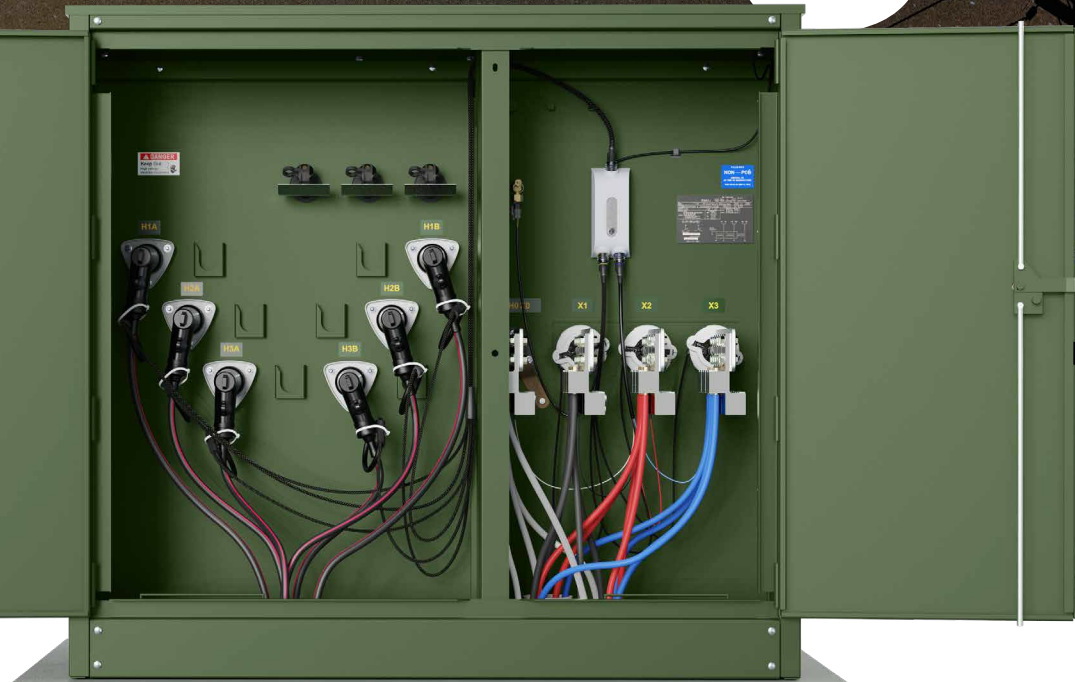


Bringing Intelligence to Your Transformers

# ubigrid DTM+



**ubicquia** simply connected simply smart™

## Visibility at the Transformer and Across the Distribution Grid



The UbiGrid DTM+ brings unprecedented clarity to the distribution grid between the substation and the meter. With real-time distribution transformer monitoring, you can proactively tackle potential grid problems, actively support customers, and reduce O&M costs.

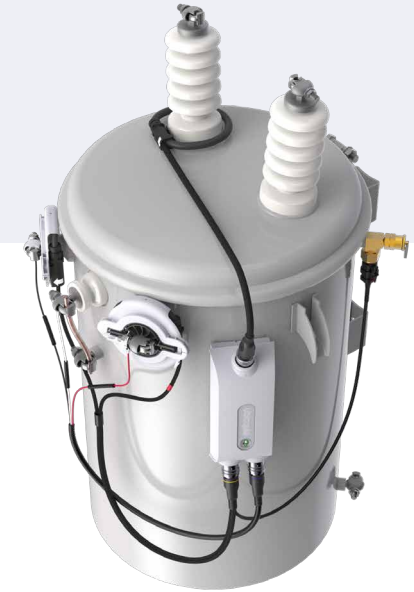
This innovative solution combines many of the grid monitoring capabilities of a traditional line sensor with a distribution transformer monitor. The advanced sensors in the DTM+ lets you focus on what is happening across the grid and at the transformer. Receive valuable data-verified insights such as transformer performance, interruptions on the primary, loss-of-life calculations, and other electrical parameters.

All in real-time.

### CLARITY THAT DRIVES OPERATIONAL EFFICIENCY

The DTM+ uses public or private LTE communications to give you the speed and network connectivity needed to fully realize your grid modernization initiatives. It continually monitors power, oil temperature and pressure, pole tilt, vibration and more. This data is brought to life in UbiVu, our cloud management platform, or through APIs that integrate with many common utility systems.

The small-footprint DTM+ was intelligently designed so that it can be installed in minutes on either pole-mount or pad mounted transformers.



Build a more resilient grid with decisions that are backed by data. With the DTM+ you receive:

- 360-degree Visibility
- Real-time AI & Analytics
- Asset & Data
- Simple Installation

Bringing edge intelligence and actionable insights to your grid



### 360-degree Visibility

- Monitors temperature and pressure
- Monitors primary current and secondary voltage and current
- Current diversion & overloading
- Detects voltage sag/swells
- Metered power output and load
- Monitors transformer/pole tilt and impact
- Primary Current fault detection



### Real-time AI & Analytics

- Load and phase imbalance
- Data-based failure prediction
- Oscillography
- Arc detection & tamper alerts
- Advanced health analytics
- Public or private LTE



### Asset & Notification Data

- Proactive maintenance with configurable alerts and thresholds
- APIs for asset management integration
- GPS



### Simple Installation

- Installs in minutes
- Non-invasive retrofits
- One platform for pole and padmount transformers
- In-field commissioning app



## Building a More Resilient Distribution Grid

### Proactive Asset Management

With a real-time view of critical grid asset data, utilities now have the insight to develop true 'condition-based maintenance' programs and extend the life of the asset.

### Improved Circuit Analytics

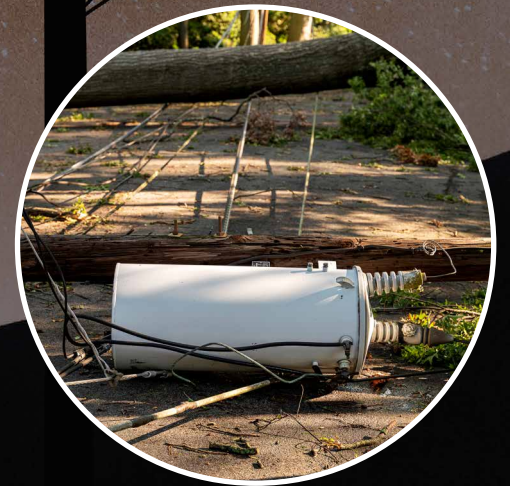
Utilities get a crystal-clear picture of capacity across the grid and can recognize load trends and fluctuations, voltage imbalances and overloaded transformers.

### Circuit Fault Detection

By remotely identifying primary and secondary faults and momentary interruptions, utilities can quickly locate the problem and reduce the outage duration.

### Theft Detection

Utilities can identify power anomalies helping to protect revenue while building a safer and more reliable grid.



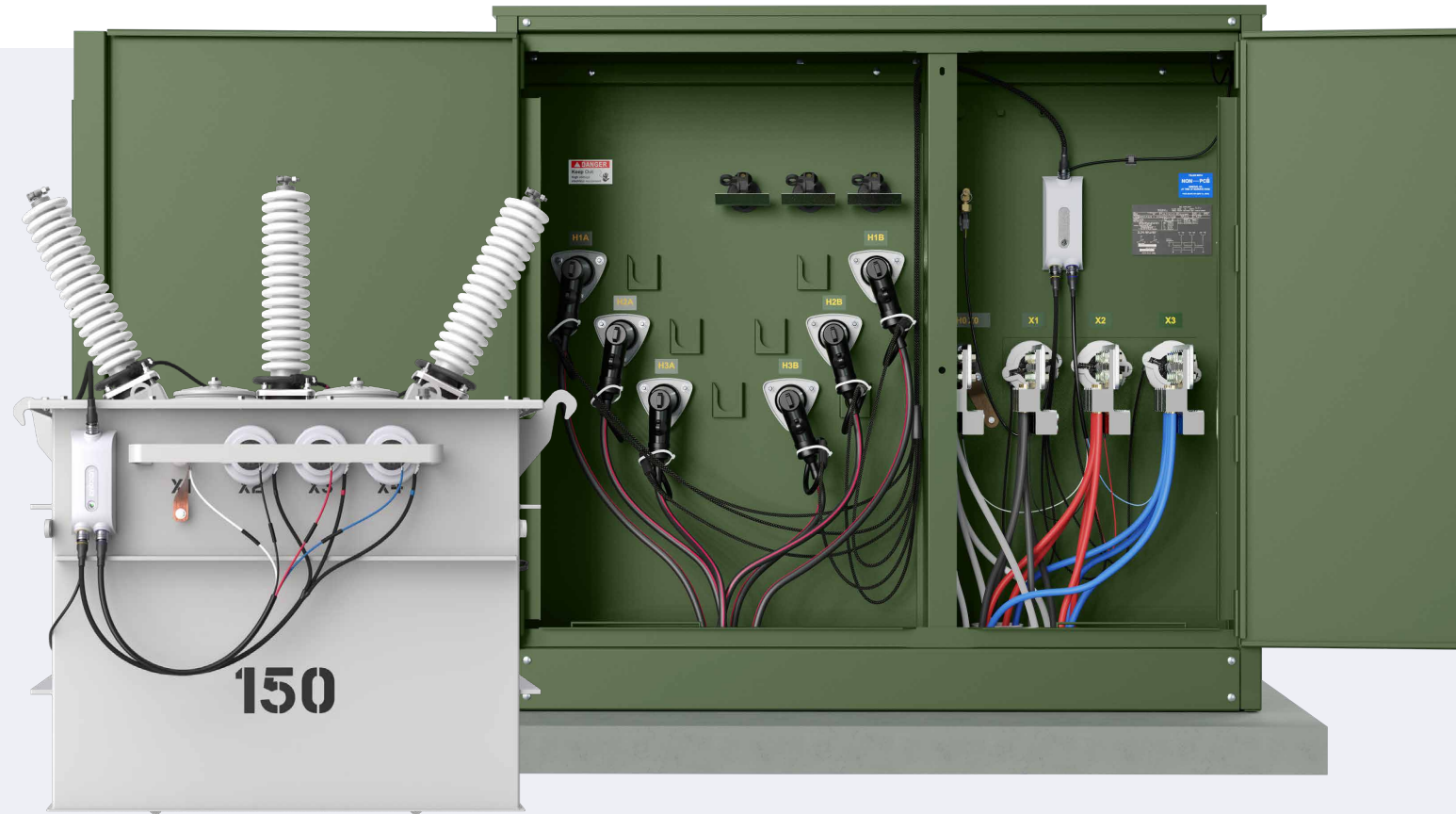
## Supported Transformers



PADMOUNT – LOOP/RADIAL

AERIAL

1 Phase



AERIAL

PADMOUNT – LOOP/RADIAL

3 Phase



### TRANSFORMER CONFIGURATIONS

#### Single Phase Pole & Padmount

- Primary current: radial (1) or loop (2)
- Secondary current and voltage with 2 inputs

#### Three Phase Padmount

- Primary current: radial (3) or loop (6)
- Secondary current and voltage with 3 inputs

### SPECIFICATIONS

**Dimensions** 8.8" x 3.9" x 2.5"

**Weight** < 2 lbs

**Power Supply** Integrated

**Average Power Consumption** 1.7 W typical

**Secondary Input Voltage Range** 90V to 506VAC

**Power Surge Protection** 20kV/10kA – ANSI C136.2 2018, Extreme

**Primary Current** 100 Amps typical/expansion capable

**Secondary Current** 1000 Amps typical/expansion capable

**Pressure** Up to 30 psi absolute, +/- 0.5 psi accuracy

**Temperature** Capable of measuring up to 302°F / 150°C

**DTM Operating Temperature Range** -40°C to +70°C  
(Up to 105°C transformer surface temperature)

**Firmware Updates** OTA upgrades

**Comm. Module** LTE: Cat 1

**Location Services** GPS

**IP Rating** IP67

**Impact Rating** IK09

**Tilt Detection** +/- 180°, 1° increments from reference value

**Impact Detection** Up to 8g Impact

**Security** LTE 128/256-bit encryption

### ENERGY/POWER METER SPECIFICATIONS

**Energy Consumption** Wh (+/-1.5% accuracy)

**Active Power** Watts (+/-1.5% accuracy)

**Reactive Power** VAR (+/-2% accuracy)

**Power Factor Accuracy** 0.5%

**Line Voltage Accuracy** +/-0.5%

**Line Current Accuracy** +/-1%

**WARRANTY** 10-Year Warranty

### ALERTS AND NOTIFICATIONS

- Temperature
- Pressure
- Impact detection
- Line frequency
- Tilt detection
- Last Gasp (Power Loss)
- Primary current
- Secondary current

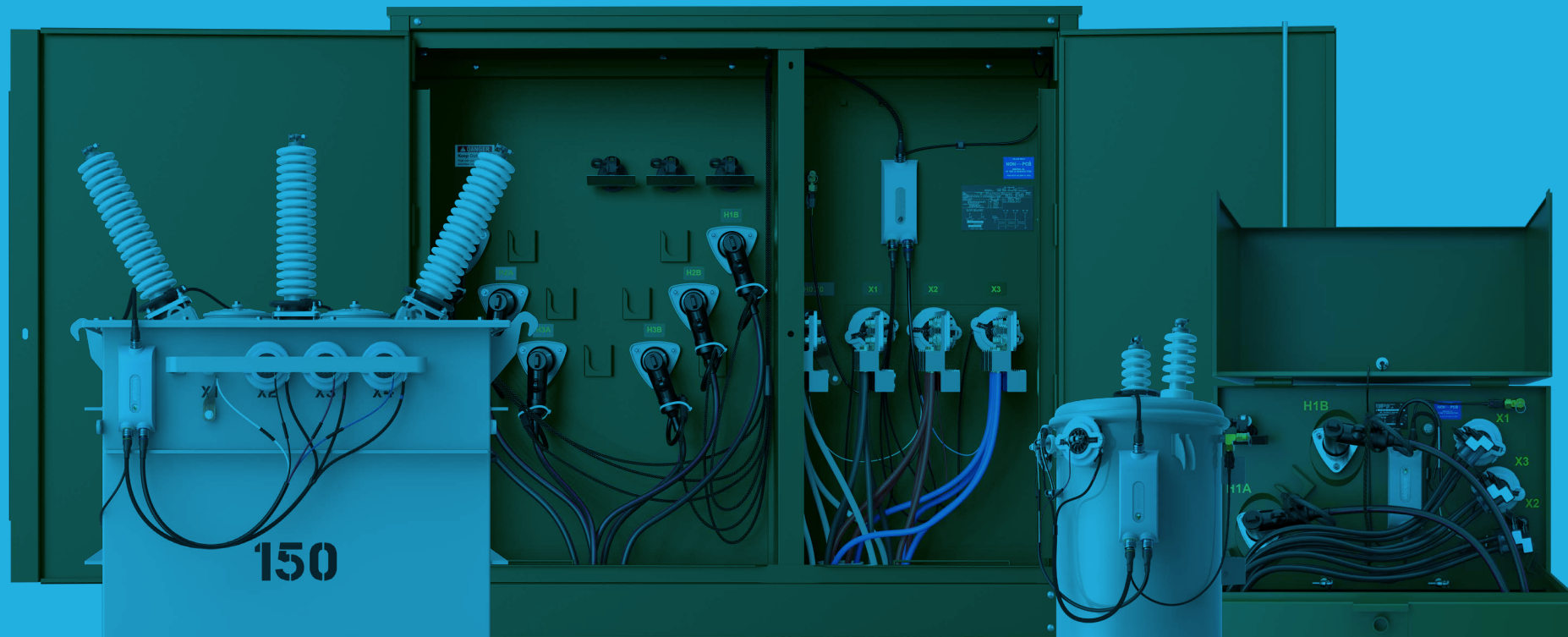
### HEALTH REPORTS

- Last Gasp
- Primary current detection
- Secondary current detection



	Single Phase Pole Mount	Single Phase Pad Mount	Three Phase Pad Mount
<b>Primary Current</b>	•	•	•
<b>Secondary Voltage</b>	•	•	•
<b>Secondary Current</b>	•	•	•
<b>Sag/swell Detection</b>	•	•	•
<b>GPS</b>	•	•	•
<b>Cat-1 LTE</b>	•	•	•
<b>Power Loss</b>	•	•	•
<b>Temperature</b>	•	•	•
<b>Tilt Detection</b>	•	•	•
<b>Impact Detection</b>	•	•	•
<b>Pressure Measurement</b>	•	•	•
<b>Loop Current</b>		•	•
<b>Oscillography</b>	•	•	•
<b>External Dry Contacts</b>		•	•
<b>Status Indicator</b>	•	•	•

ubigrid DTM+



ubicquia. simply connected simply smart.™